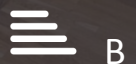
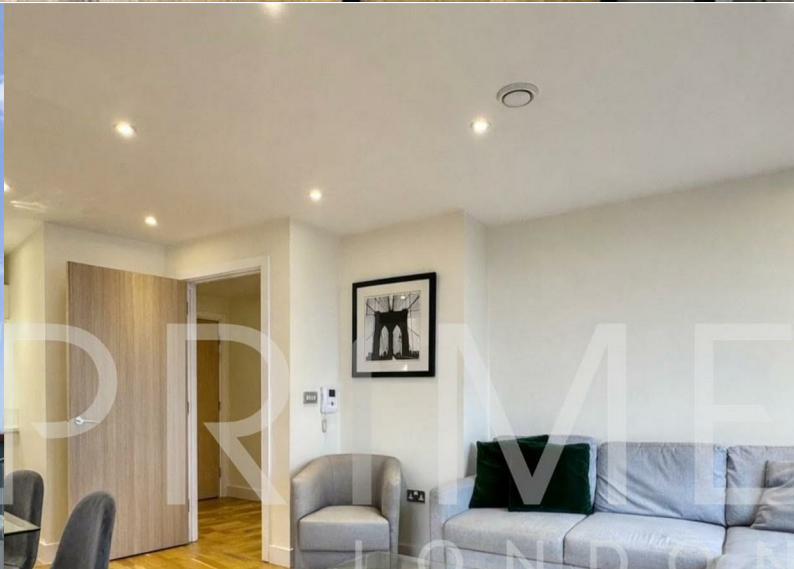


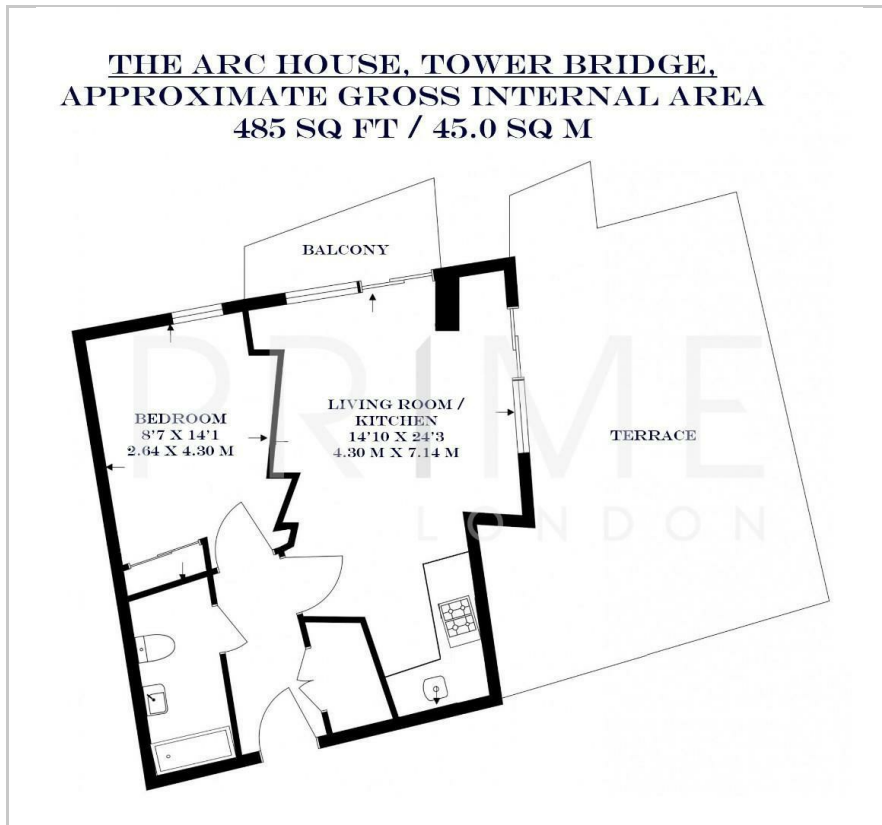
## Arc House

18 Maltby Street, Tower Bridge, SE1 3GP

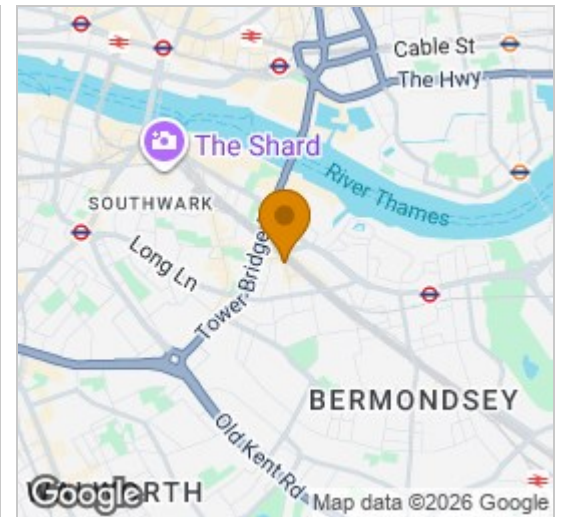
Asking Price £425,000



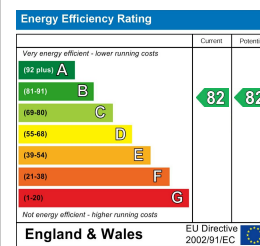
## Floor Plan



## Area Map



## Energy Efficiency Graph



## Viewing

By appointment. Contact us on 0207 928 6663 if you wish to arrange a viewing appointment for this property, or require further information.

- One bedroom apartment
- Fitted wardrobe
- Access to concierge
- 484 sq ft (45.0 sqm)
- Large terrace and private balcony
- Excellent transport links



This bright one bedroom apartment in Arc House, with sizeable terrace, spans 485 sq ft (45 sqm) internally and is available for sale through Prime London.

The apartment offers contemporary living in a modern development just moments from Tower Bridge and London Bridge. The open-plan living space is bathed in natural light from floor-to-ceiling windows, leading out to a private balcony and the large private terrace area.

Residents of The Arc also benefit from a daytime concierge and secure private communal gardens.

Centrally located in the heart of London Bridge, Arc House development is only a short walking distance to Tower Bridge's bars, restaurants and gastro pubs.

Residents have excellent transport links via the River Taxi, and wonderful bus and overground train network, and both London Bridge and Tower Hill Underground Stations offering a plethora of transport opportunities, including the Jubilee line (Bermondsey station) just a short 12 mins walk away.



These particulars, whilst believed to be accurate are set out as a general outline only for guidance and do not constitute any part of an offer or contract. Intending purchasers should not rely on them as statements of representation of fact, but must satisfy themselves by inspection or otherwise as to their accuracy. No person in this firm's employment has the authority to make or give any representation or warranty in respect of the property.